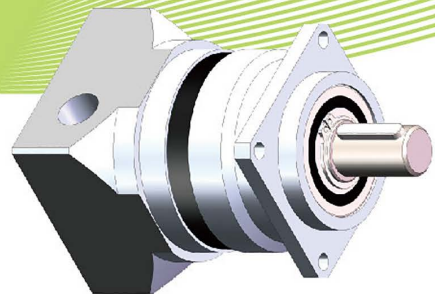
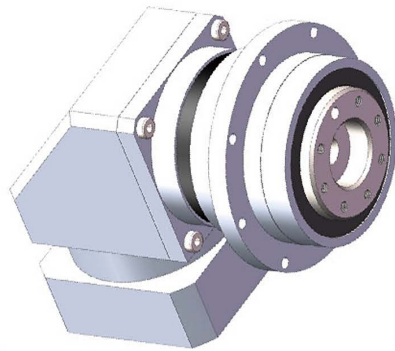
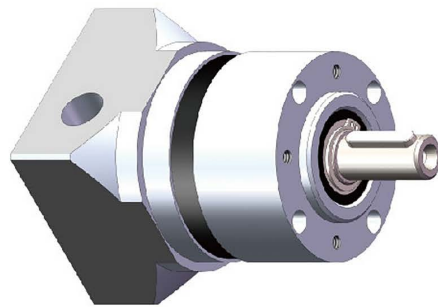


**Planetengetriebe**  
Planetary gearboxes





## 介绍 | Introduction

Mr. Reinhold Eisele has founded the first factory in Stuttgart in year 1952, it is specializing in production of planetary gearbox. In initial period, the product major sold in Europe and America area. In year 2001, Eisele entered China, began to develop Asia market. In December of year 2005, Eisele Asia Co., Ltd. was founded in Suzhou, Jiangsu province, it mainly for China and Asia regional market and take into account North American market.

Now, Eisele Asia is located at ISDN high tech park, no. 1128, east of Jiangxing rd., Wujiang economic and technological development zone, Jiangsu province. Relying on more than half a century' s experience and technology of Eisele Germany, Eisele Asia has developed by leaps and bounds. Nowadays, we have offered more than 100 thousand sets of planetary gearbox for nearly a thousand clients in Asian and American market.

We concentrate on production of planetary gearbox. With professional knowledge, high-quality staff, excellent processing equipment, perfect detection means, serious and scientific, management concept of sustainable development and service network of national coverage, our every set of planetary gearbox has gone through strict factory test, it perfectly embodies German rigorous and Chinese diligent. We always offer our clients with Germany quality and China price planetary gearbox. Looking forward to your inquiries!



# 目录 | contents

---



CPL-AB



CPL-AE



CPL-FE



WCPL-FE



WCPL-AB



WCPL-AE



WDPL



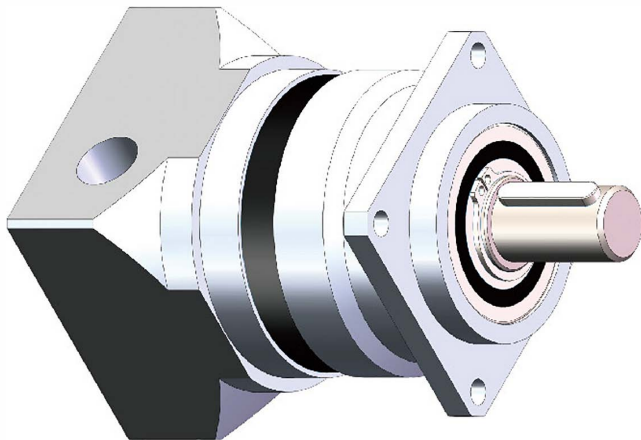
# Eisele

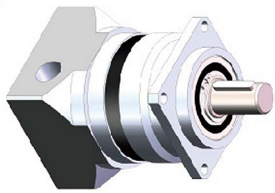
Antriebstechnik

## 行星齿轮减速机

# CPL-AB Series

PLANETARY  
GEARBOXES





技术数据 · Technical data

型号(type)		减速比(ratio)	CPL-AB-070	CPL-AB-090	CPL-AB-120	
额定输出扭矩 [nominal output torque]	Nm	3	20	40	100	
		4/5/7	26	54	120	
		10	16	40	105	
		12	36	80	170	
		16/20/40/70	42	100	210	
		25/35/50	44	100	210	
		100	18	64	165	
		120/160/200	42	100	210	
		250/350/500	44	100	210	
		700	42	100	210	
		1000	25	64	165	
加减速输出扭矩 [max.acceleration torque]	Nm	3	36	70	180	
		4/5/7	44	100	200	
		10	24	75	180	
		12	45	100	215	
		16/20/40/70	52	125	255	
		25/35/50	55	125	255	
		100	28	80	180	
		120/160/200	52	125	255	
		250/350/500	55	125	255	
		700	52	125	255	
		1000	28	80	180	
急停扭矩 [emergency torque]	Nm	3	72	160	255	
		4/5/7	84	216	200	
		10	62	160	480	
		12	72	160	410	
		16/20/40/70	84	216	400	
		25/35/50	84	216	480	
		100	62	160	410	
		120/160/200	84	216	480	
		250/350/500	84	216	480	
		700	84	216	480	
		1000	62	160	410	
额定转速[allowed nominal speed]	1/min		3500	3000	2500	
最大转速【max speed】	1/min		6000	6000	5000	
空回 [backlash]	[arcmin]	一级 ( 1stage )	<7	<6	<6	
		二级 ( 2stage )	<9	<8	<8	
		三级 ( 3stage )	<12	<12	<12	

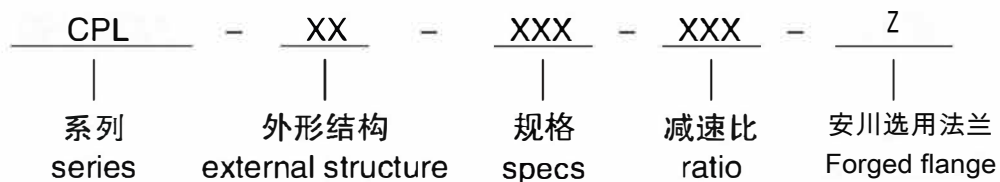
技术数据 · Technical data

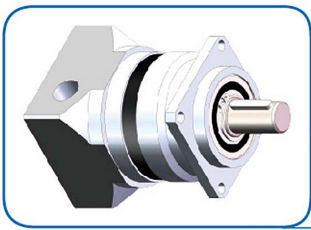
型号(type)		CPL-AB-070	CPL-AB-090	CPL-AB-120	
标准载荷[stand bearing]	径向Radialkraft	450N	1300N	2600N	
	轴Axialkraft	500N	500N	1000N	
最大载荷[max bearing]	径向Radialkraft				
	轴向Axialkraft				
扭转刚度 [torsional stiffness]	Nm/arcmin	1.3	3.4	8.3	
		1.7	4.8	14	
		2.4	7.1	17	
重量[Weight]	kg	1.0	2.3	5.8	
		1.3	3.1	7.9	
		1.6	3.9	10	
转动惯量 [mass moment of inertia]	kgcm <sup>2</sup>	3	0.45	1.37	6.54
		4/12/16	0.38	1.14	4.8
		5/20/25	0.36	1.05	4.05
		7/35	0.35	0.97	3.4
		10/40/50/70/100	0.34	0.93	3.1
		120/160/200/250/350/500/700/1000	0.34	0.93	3.12
噪音[noise level]	dbA	<62	<64	<67	
负载效率 (Vollast) [efficiency at load]	1-级 [1-stage] 94% 2-级 [2-stage] 92% 3-级 [3-stage] 90%				
平均寿命 [service life]	> 30000 Std. [h]				
润滑 [lubrication]	长效极压润滑脂 [lifetime lubrication]				
防护等级 [protection rating]	IP 54				
运行温度 [operating temperature range]	(-20 ° C + 90 ° C)				

1) 此数据是在输入速度n1=3000 1/min, 并且在S1模式下的测量结果[Value refer to n1=3000 1/min and S1-mode]  
 2) 测试次数为500次[allowed 500 times]  
 3) 测试温度必须在允许温度范围之内[Allowable operation temperature must be kept]  
 4) 噪音指标是在1米距离, 输入速度n1=3000 1/min的测量值 [Measured in 1mtr. distance at n1=3000 1/min]

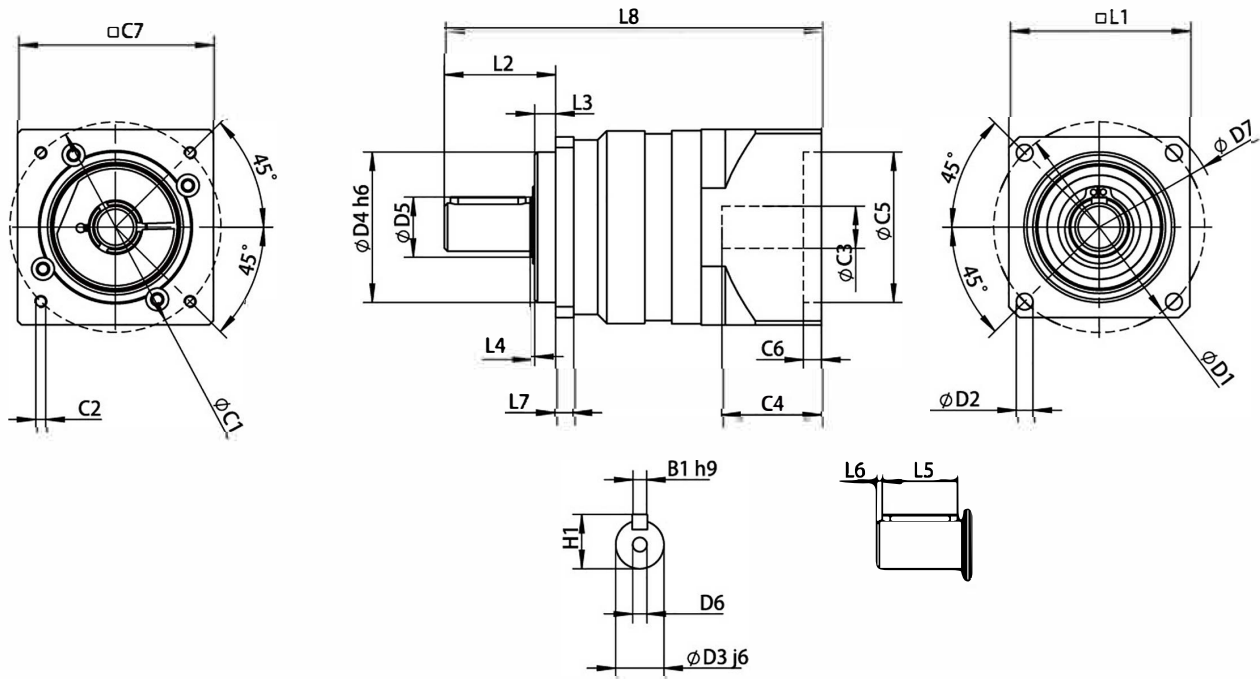
备注: 150系列减速机, 请咨询工厂

型号说明 Model description





技术数据 · Technical data



尺寸	CPL-AB-070 i=3-10	CPL-AB-070 i=16-100	CPL-AB-090 i=3-10	CPL-AB-090 i=16-100	CPL-AB-120 i=3-10	CPL-AB-120 i=16-100
D1	70	70	100	100	130	130
D2	5.5	5.5	6.6	6.6	9	9
D3 j6	16	16	22	22	32	32
D4 h6	50	50	80	80	110	110
D5	20	20	30	30	40	40
D6	M5	M5	M8	M8	M12	M12
D7	80	80	116	116	152	152
L1	60	60	90	90	115	115
L2	37	37	46	46	65	65
L3	7	7	10	10	5	5
L4	1.5	1.5	1	1	1	1
L5	25	25	30	30	50	50
L6	2	2	2	2	4	4
L7	6	6	8	8	12	12
L8	128	147.5	164	196	225	265.5
C1	70	70	90	90	145	145
C2	M5	M5	M6	M6	M8	M8
C3	14	14	19	19	24	24
C4	33	33	41.5	41.5	59	59
C5	50	50	70	70	110	110
C6	6	6	9	9	9	9
C7	65	65	90	90	120	120
B1 h9	5	5	6	6	10	10
H1	18	18	24.5	24.5	35	35

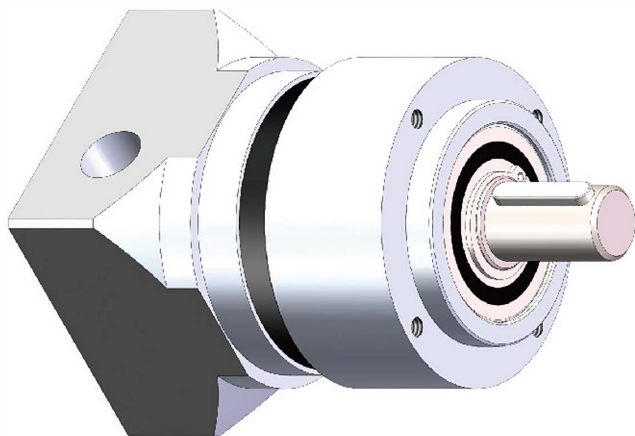
Ci-C7为配置标准电机尺寸，仅供参考。如有不明，请咨询艾斯勒工厂。Ci-C7 is the standard motor size for reference only. If you have any questions, please consult Eisele factory.



**Eisele**  
Antriebstechnik

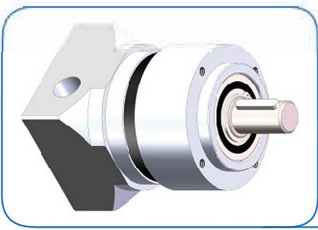
**行星齿轮减速机**

**CPL-AE** Series



**PLANETARY  
GEARBOXES**





技术数据 · Technical data

型号(type)		减速比(ratio)	CPL-AE-070	CPL-AE-090	CPL-AE-120	
额定输出扭矩 [nominal output torque]	Nm	3	20	40	100	
		4/5/7	26	54	120	
		10	16	40	105	
		12	36	80	170	
		16/20/40/70	42	100	210	
		25/35/50	44	100	210	
		100	18	64	165	
		120/160/200	42	100	210	
		250/350/500	44	100	210	
		700	42	100	210	
		1000	25	64	165	
加减速输出扭矩 [max.acceleration torque]	Nm	3	36	70	180	
		4/5/7	44	100	200	
		10	24	75	180	
		12	45	100	215	
		16/20/40/70	52	125	255	
		25/35/50	55	125	255	
		100	28	80	180	
		120/160/200	52	125	255	
		250/350/500	55	125	255	
		700	52	125	255	
		1000	28	80	180	
急停扭矩 [emergency torque]	Nm	3	72	160	255	
		4/5/7	84	216	200	
		10	62	160	480	
		12	72	160	410	
		16/20/40/70	84	216	400	
		25/35/50	84	216	480	
		100	62	160	410	
		120/160/200	84	216	480	
		250/350/500	84	216	480	
		700	84	216	480	
		1000	62	160	410	
额定转速[allowed nominal speed]	1/min		3500	3000	2500	
最大转速【max speed】	1/min		6000	6000	5000	
空回 [backlash]	[arcmin]	一级 ( 1stage )	<7	<6	<6	
		二级 ( 2stage )	<10	<8	<8	
		三级 ( 3stage )	<14	<12	<12	

技术数据 · Technical data

型号(type)			CPL-AE-070	CPL-AE-090	CPL-AE-120	
标准载荷[stand bearing]	径向Radialkraft		450N	1300N	2600N	
	轴Axialkraft		500N	500N	1000N	
最大载荷[max bearing]	径向Radialkraft					
	轴向Axialkraft					
扭转刚度 [torsional stiffness]	Nm/arcmin		1.3	3.4	8.3	
			1.7	4.8	14	
			2.4	7.1	17	
重量[Weight]	kg		1.0	2.3	5.8	
			1.3	3.1	7.9	
			1.6	3.9	10	
转动惯量 [mass moment of inertia]	kgcm <sup>2</sup>	3	0.45	1.37	6.54	
		4/12/16	0.38	1.14	4.8	
		5/20/25	0.36	1.05	4.05	
		7/35	0.35	0.97	3.4	
		10/40/50/70/100	0.34	0.93	3.1	
		120/160/200/250/350/500/700/1000	0.34	0.93	3.12	
噪音[noise level]	dbA		<62	<64	<67	
负载效率 (Vollast) [efficiency at load]	1-级 [1-stage] 94% 2-级 [2-stage] 92% 3-级 [3-stage] 90%					
平均寿命 [service life]	> 30000 Std. [h]					
润滑 [lubrication]	长效极压润滑脂 [lifetime lubrication]					
防护等级 [protection rating]	IP 54					
运行温度 [operating temperature range]	(-20 ° C + 90 ° C)					

1) 此数据是在输入速度n1=3000 1/min, 并且在S1模式下的测量结果[Value refer to n1=3000 1/min and S1-mode]

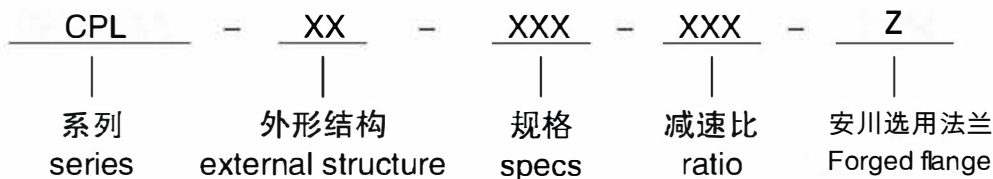
2) 测试次数为500次[allowed 500 times]

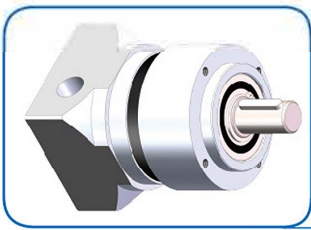
3) 测试温度必须在允许温度范围之内[Allowable operation temperature must be kept]

4) 噪音指标是在1米距离, 输入速度n1=3000 1/min的测量值 [Measured in 1mtr. distance at n1=3000 1/min]

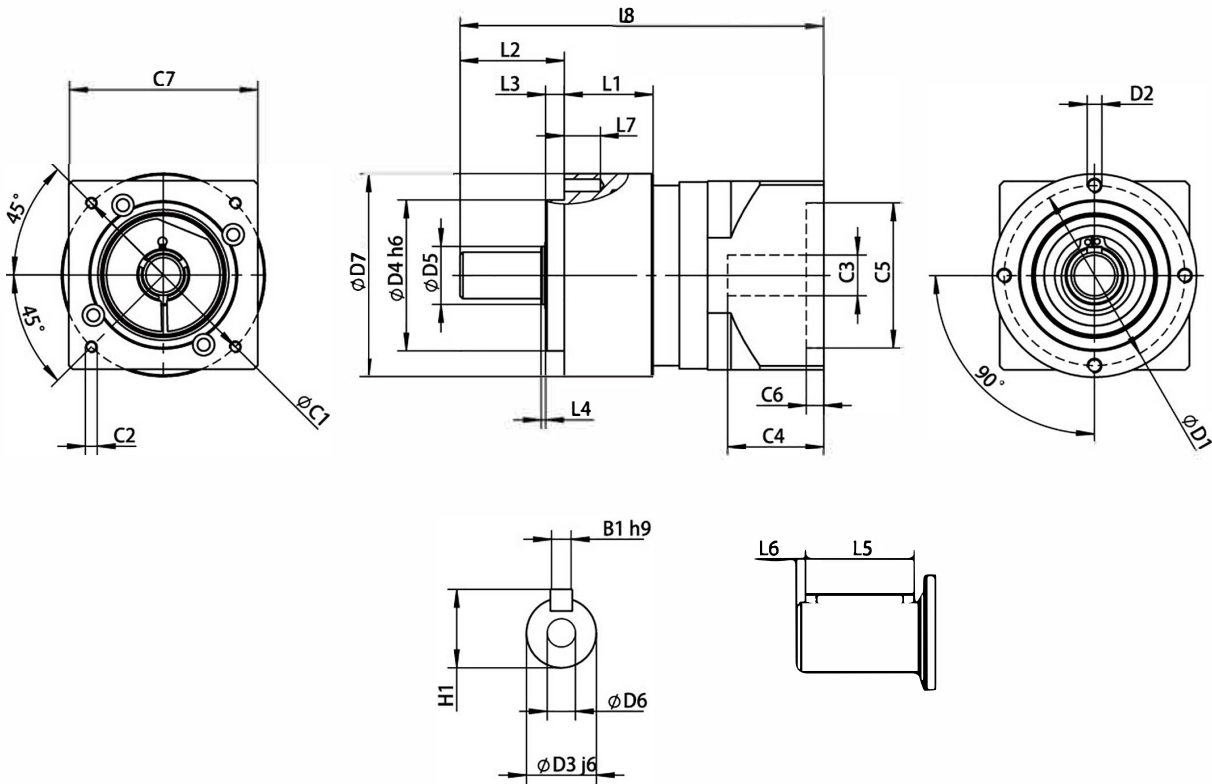
备注: 150系列减速机, 请咨询工厂

型号说明 Model description





技术数据 · Technical data



尺寸	CPL-AE-070 i=3-10	CPL-AE-070 i=16-100	CPL-AE-090 i=3-10	CPL-AE-090 i=16-100	CPL-AE-120 i=3-10	CPL-AE-120 i=16-100
D1	62	62	80	80	108	108
D2	M5	M5	M6	M6	M8	M8
D3 j6	16	16	22	22	32	32
D4 h6	52	52	68	68	90	90
D5	20	20	30	30	40	40
D6	M5	M5	M8	M8	M12	M12
D7	70	70	90	90	120	120
L1	30	30	45.5	45.5	59	59
L2	36	36	46	46	70	70
L3	6.5	6.5	9	9	10	10
L4	1	1	2	2	1	1
L5	25	25	30	30	50	50
L6	2	2	2	2	4	4
L7	10	10	14	14	20	20
L8	125.5	145	164	196	225	265.5
C1	70	70	90	90	145	145
C2	M5	M5	M6	M6	M8	M8
C3	14	14	19	19	24	24
C4	33	33	41.5	41.5	59	59
C5	50	50	70	70	110	110
C6	6	6	9	9	9	9
C7	65	65	90	90	120	120
B1 h9	5	5	6	6	10	10
H1	18	18	24.5	24.5	35	35

C1-C7为配置标准电机尺寸, 仅供参考。如有不明, 请咨询艾斯勒工厂。C1-C7is the standard motor size for reference only. If you have any questions, please consult Eisele factory.



# Eisele

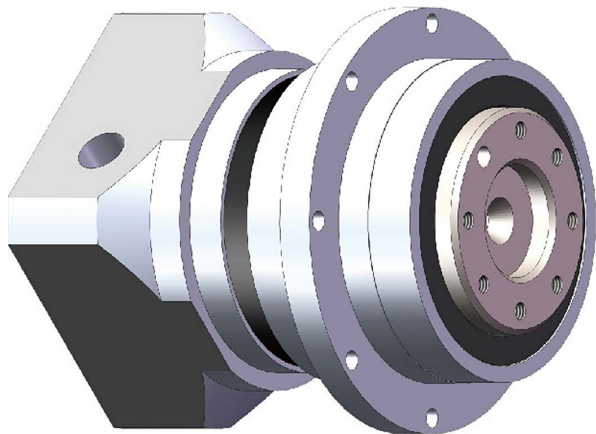
Antriebstechnik

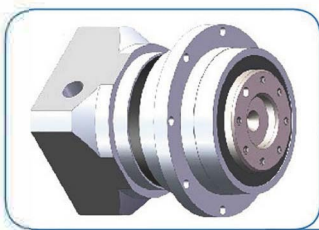
## 行星齿轮减速机

---

# CPL-FE Series

PLANETARY  
GEARBOXES





技术数据 · Technical data

型号(type)		减速比(ratio)	CPL-FE-070	CPL-FE-090	CPL-FE-120	CPL-FE-140
额定输出扭矩 [nominal output torque]	Nm	4		40	100	230
		5/7	26	54	120	310
		10	16	40	105	180
		12		80	170	360
		16/20/40/70	42	100	210	340
		25/35/50	44	100	210	340
		100	18	64	165	190
		120/160/200	42	100	210	340
		250/350/500	44	100	210	340
		700	42	100	210	340
		1000	25	64	165	190
加减速输出扭矩 [max.acceleration torque]	Nm	4		70	180	360
		5/7	44	100	200	460
		10	24	75	180	340
		12		100	215	360
		16/20/40/70	52	125	255	460
		25/35/50	55	125	255	460
		100	28	80	180	340
		120/160/200	52	125	255	500
		250/350/500	55	125	255	500
		700	52	125	255	500
		1000	28	80	180	340
急停扭矩 [emergency torque]	Nm	4		160	255	860
		5/7	84	216	200	1000
		10	62	160	480	800
		12		160	410	860
		16/20/40/70	84	216	400	1000
		25/35/50	84	216	480	1000
		100	62	160	410	800
		120/160/200	84	216	480	1000
		250/350/500	84	216	480	1000
		700	84	216	480	1000
		1000	62	160	410	800
额定转速[allowed nominal speed]	1/min			3000	2500	2500
最大转速【max sPeed】	1/min		6000	6000	5000	4500
空回 [backlash]	[arcmin]	一级 ( 1stage )	<6	<6	<6	<8
		二级 ( 2stage )	<8	<8	<8	<12
		三级 ( 3stage )	<12	<12	<12	<16

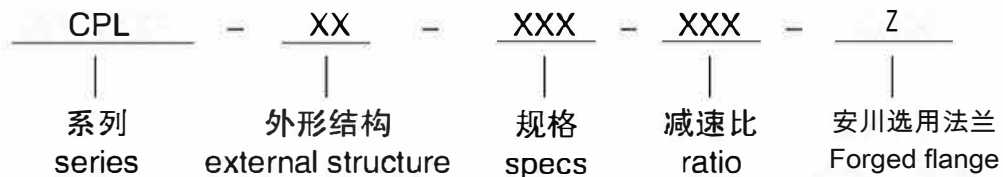
技术数据 · Technical data

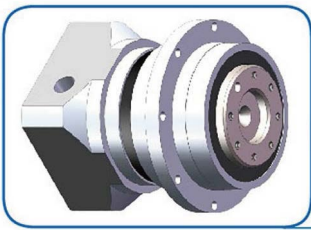
型号(type)		CPL-FE-070	CPL-FE-090	CPL-FE-120	CPL-FE-140	
标准载荷[stand bearing]	径向Radialkraft	1125N	2800N	5000N	12000N	
	轴Axialkraft	1250N	2500N	4500N	12000N	
最大载荷[max bearing]	径向Radialkraft					
	轴Axialkraft					
扭转刚度 [torsional stiffness]	Nm/arcmin	10/100/1000	1.3	3.4	8.3	22
		7/70/700	1.7	4.8	14	27
		其他 [other ratio]	2.4	7.1	17	33
重量[Weight]	kg	一级	1.0	2.3	5.8	10
		二级	1.3	3.1	7.9	12.5
		三级	1.6	3.9	10	15
转动惯量 [mass moment of inertia]	kgcm <sup>2</sup>	4		1.37	6.54	12.23
		12/16	0.38	1.14	4.8	7.65
		5/20/25	0.36	1.05	4.05	6.24
		7/35	0.35	0.97	3.4	4.7
		10/40/50/70/100	0.34	0.93	3.1	3.8
		120/160/200/250/350/500/700/1000	0.34	0.93	3.12	3.9
噪音[noise level]	dbA	<62	<64	<67	<70	
负载效率 (Vollast) [efficiency at load]	1-级 [1-stage] 94% 2-级 [2-stage] 92% 3-级 [3-stage] 90%					
平均寿命 [service life]	> 30000 Std. [h]					
润滑 [lubrication]	长效极压润滑脂 [lifetime lubrication]					
防护等级 [protection rating]	IP 54					
运行温度 [operating temperature range]	(-20 ° C + 90 ° C )					

1) 此数据是在输入速度n1=3000 1/min, 并且在S1模式下的测量结果[Value refer to n1=3000 1/min and S1-mode]  
 2) 测试次数为500次[allowed 500 times]  
 3) 测试温度必须在允许温度范围之内[Allowable operation temperature must be kept]  
 4) 噪音指标是在1米距离, 输入速度n1=3000 1/min的测量值 [Measured in 1mtr. distance at n1=3000 1/min]

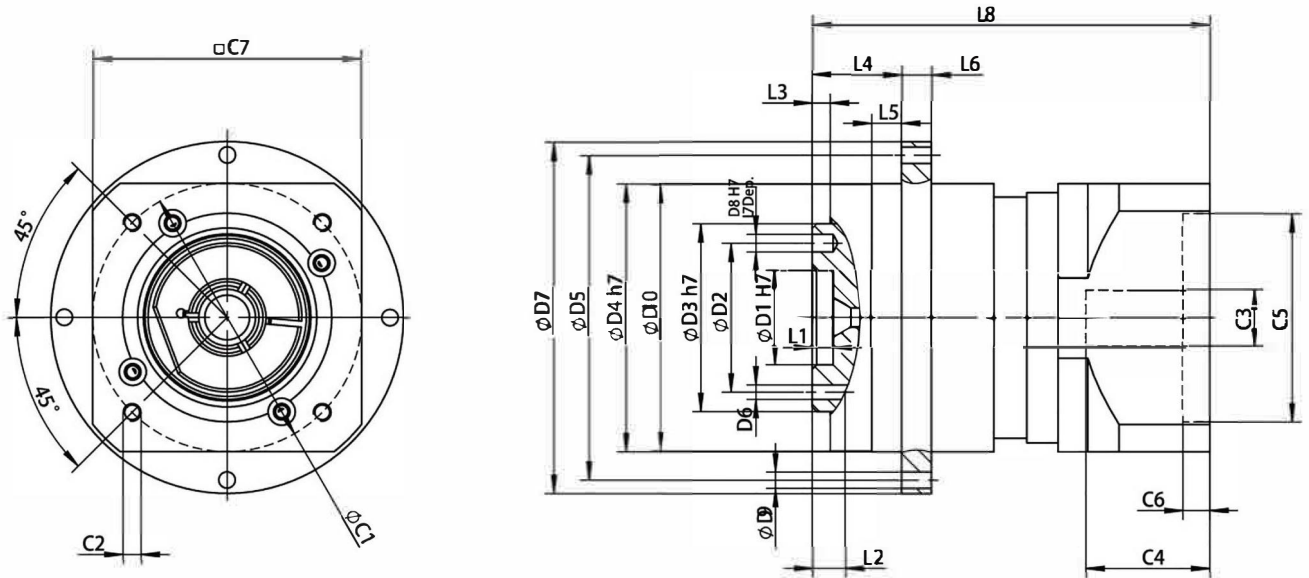
备注: 150系列减速机, 请咨询工厂

型号说明 Model description





技术数据 · Technical data



尺寸	CPL-FE-070 i=5-10	CPL-FE-070 i=20-100	CPL-FE-090 i=3-10	CPL-FE-090 i=16-100	CPL-FE-120 i=3-10	CPL-FE-120 i=16-100	CPL-FE-140 i=16-100
D1 h7	20	20	31.5	31.5	40	40	50
D2	31.5	31.5	50	50	63	63	80
D3 h7	40	40	63	63	80	80	100
D4 h7	64	64	90	90	110	110	140
D5	79	79	109	109	135	135	168
D6	7xM5	7xM5	7xM6	7xM6	11xM6	11xM6	11xM8
D7	86	86	118	118	145	145	179
D8 H7	5	5	6	6	6	6	8
D9	4.5	4.5	8x5.5	8x5.5	8x5.5	8x5.5	12x6.6
D10	63.5	63.5	89.5	89.5	109.5	109.5	139.5
L1	5	5	7	7	6	6	8
L2	11	11	13.5	13.5	18	18	20
L3	3	3	6	6	6	6	6
L4	19.5	19.5	30	30	29	29	38
L5	7	7	10	10	10	10	15
L6	7	7	10	10	15	15	10
L7	7	7	7	7	7	7	16
L8	112.5	134.5	133.5	165.5	174	214.5	241.5
C1	70	70	90	90	145	145	145
C2	M5	M5	M6	M6	M8	M8	M8
C3	14	14	19	19	24	24	24
C4	33	33	41.5	41.5	59	59	59
C5	50	50	70	70	110	110	110
C6	6	6	9	9	9	9	9
C7	65	65	90	90	120	120	120

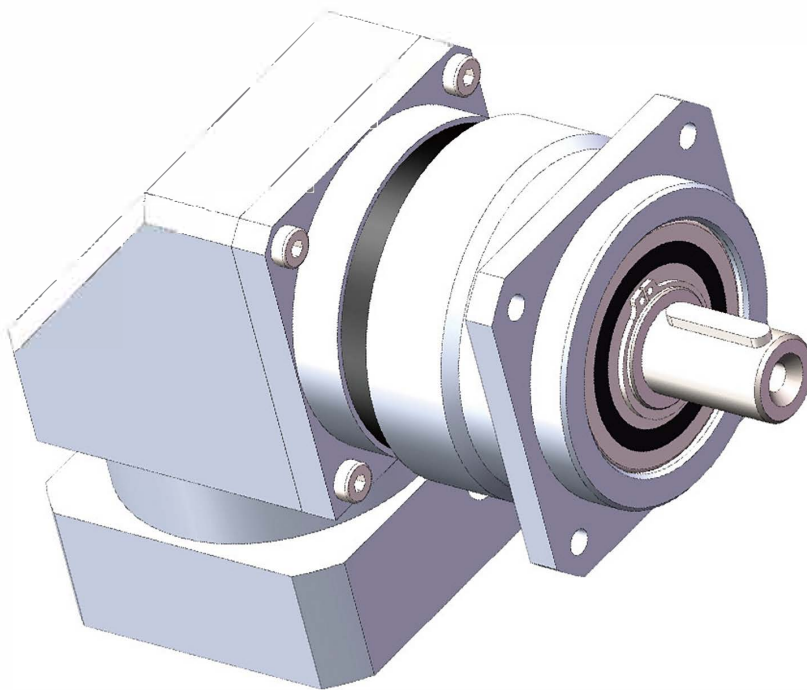
C1-C7为配置标准电机尺寸, 仅供参考。如有不明, 请咨询艾斯勒工厂。C1-C7 is the standard motor size for reference only. If you have any questions, please consult Eisele factory.



**Eisele**  
Antriebstechnik

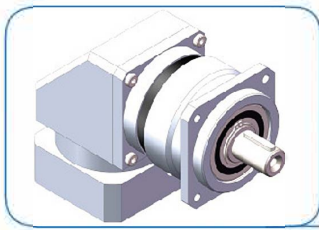
**行星齿轮减速机**

**WCPL-AB** Series



**PLANETARY  
GEARBOXES**





技术数据 · Technical data

型号(type)		减速比(ratio)	WCPL-AB-070	WCPL-AB-090	WCPL-AB-120	
额定输出扭矩 [nominal output torque]	Nm	3	20	40	100	
		4/5/7	26	54	120	
		10	16	40	105	
		12	36	80	170	
		16/20/40/70	42	100	210	
		25/35/50	44	100	210	
		100	18	64	165	
		120/160/200	42	100	210	
		250/350/500	44	100	210	
		700	42	100	210	
		1000	25	64	165	
加减速输出扭矩 [max.acceleration torque]	Nm	3	36	70	180	
		4/5/7	44	100	200	
		10	24	75	180	
		12	45	100	215	
		16/20/40/70	52	125	255	
		25/35/50	55	125	255	
		100	28	80	180	
		120/160/200	52	125	255	
		250/350/500	55	125	255	
		700	52	125	255	
		1000	28	80	180	
急停扭矩 [emergency torque]	Nm	3	72	160	255	
		4/5/7	84	216	200	
		10	62	160	480	
		12	72	160	410	
		16/20/40/70	84	216	400	
		25/35/50	84	216	480	
		100	62	160	410	
		120/160/200	84	216	480	
		250/350/500	84	216	480	
		700	84	216	480	
		1000	62	160	410	
额定转速[allowed nominal speed]	1/min		3500	3000	2500	
最大转速【max speed】	1/min		6000	6000	5000	
空回 [backlash]	[arcmin]	一级 ( 1stage )	<9	<8	<8	
		二级 ( 2stage )	<12	<10	<10	
		三级 ( 3stage )	<16	<14	<14	

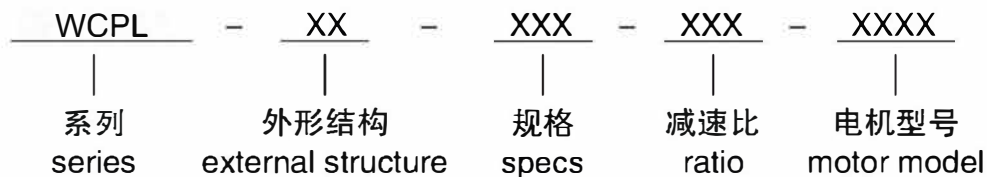
技术数据 · Technical data

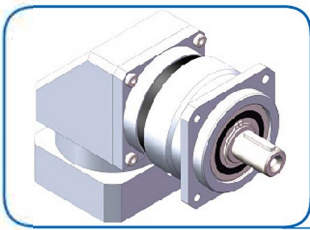
型号(type)			WCPL-AB-070	WCPL-AB-090	WCPL-AB-120
标准载荷[stand bearing]	径向Radialkraft		450N	1300N	2600N
	轴Axialkraft		500N	500N	1000N
最大载荷[max bearing]	径向Radialkraft				
	轴向Axialkraft				
扭转刚度 [torsional stiffness]	Nm/arcmin		1.3	3.4	8.3
			1.7	4.8	14
			2.4	7.1	17
重量[Weight]	kg		1.0	2.3	5.8
			1.3	3.1	7.9
			1.6	3.9	10
转动惯量 [mass moment of inertia]	kgcm <sup>2</sup>	3	0.90	2.74	7.80
		4/12/16	0.76	2.28	7.20
		5/20/25	0.72	2.10	6.07
		7/35	0.70	1.94	5.10
		10/40/50/70/100	0.68	1.86	4.73
		120/160/200/250/350/500/700/1000	0.68	1.86	3.68
噪音[noise level]	dbA		≤68	≤74	≤85
负载效率 (Vollast) [efficiency at load]	1-级 [1-stage] 94% 2-级 [2-stage] 92% 3-级 [3-stage] 90%				
平均寿命 [service life]	> 30000 Std. [h]				
润滑 [lubrication]	长效极压润滑脂 [lifetime lubrication]				
防护等级 [protection rating]	IP 54				
运行温度 [operating temperature range]	(-20 ° C + 90 ° C)				

1) 此数据是在输入速度n1=3000 1/min, 并且在S1模式下的测量结果[Value refer to n1=3000 1/min and S1-mode]  
 2) 测试次数为500次[allowed 500 times]  
 3) 测试温度必须在允许温度范围之内[Allowable operation temperature must be kept]  
 4) 噪音指标是在1米距离, 输入速度n1=3000 1/min的测量值 [Measured in 1mtr. distance at n1=3000 1/min]

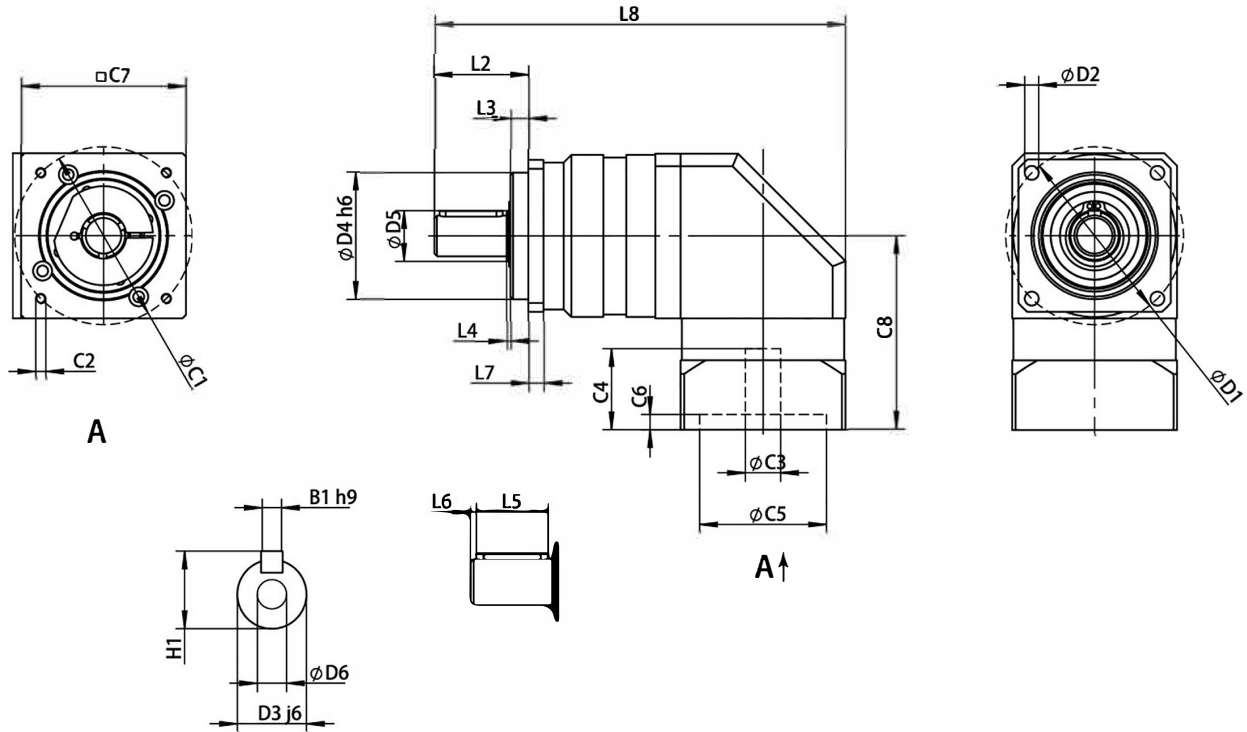
备注: 150系列减速机, 请咨询工厂

型号说明 Model description





技术数据 · Technical data



尺寸	WCPL-AB-070 i=3-10	WCPL-AB-070 i=16-100	WCPL-AB-090 i=3-10	WCPL-AB-090 i=16-100	WCPL-AB-120 i=3-10	WCPL-AB-120 i=16-100
D1	70	70	100	100	130	130
D2	5.5	5.5	6.6	6.6	9	9
D3 j6	16	16	22	22	32	32
D4 h6	50	50	80	80	110	110
D5	20	20	30	30	40	40
D6	M5	M5	M8	M8	M12	M12
D7	80	80	116	116	152	152
L1	60	60	90	90	115	115
L2	37	37	46	46	65	65
L3	7	7	10	10	5	5
L4	1.5	1.5	1	1	1	1
L5	25	25	30	30	50	50
L6	2	2	2	2	4	4
L7	6	6	8	8	12	12
L8	162	181.5	211	243	288	328.5
C1	70	70	90	90	145	145
C2	M5	M5	M6	M6	M8	M8
C3	14	14	19	19	24	24
C4	33	33	41.5	41.5	59	59
C5	50	50	70	70	110	110
C6	6	6	9	9	9	9
C7	65	65	90	90	120	120
C8	76.5	76.5	96	96	113.5	113.5
B1 h9	5	5	6	6	10	10
H1	18	18	24.5	24.5	35	35

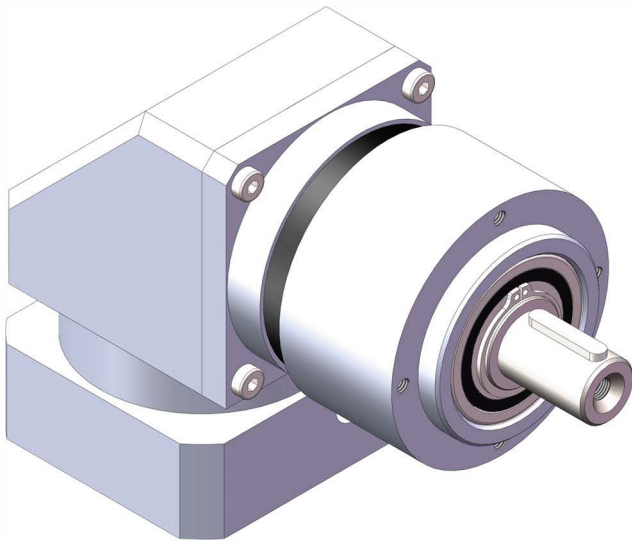
C1-C8为配置标准电机尺寸，仅供参考。如有不明，请咨询艾斯勒工厂。C1-C8 is the standard motor size for reference only. If you have any questions, please consult Eisele factory.



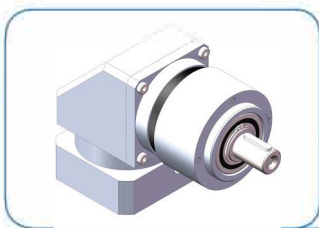
**Eisele**  
Antriebstechnik

**行星齿轮减速机**

**WCPL-AE** Series



**PLANETARY  
GEARBOXES**



技术数据 · Technical data

型号(type)		减速比(ratio)	WCPL-AE-070	WCPL-AE-090	WCPL-AE-120	
额定输出扭矩 [nominal output torque]	Nm	3	20	40	100	
		4/5/7	26	54	120	
		10	16	40	105	
		12	36	80	170	
		16/20/40/70	42	100	210	
		25/35/50	44	100	210	
		100	18	64	165	
		120/160/200	42	100	210	
		250/350/500	44	100	210	
		700	42	100	210	
		1000	25	64	165	
加减速输出扭矩 [max.acceleration torque]	Nm	3	36	70	180	
		4/5/7	44	100	200	
		10	24	75	180	
		12	45	100	215	
		16/20/40/70	52	125	255	
		25/35/50	55	125	255	
		100	28	80	180	
		120/160/200	52	125	255	
		250/350/500	55	125	255	
		700	52	125	255	
		1000	28	80	180	
急停扭矩 [emergency torque]	Nm	3	72	160	255	
		4/5/7	84	216	200	
		10	62	160	480	
		12	72	160	410	
		16/20/40/70	84	216	400	
		25/35/50	84	216	480	
		100	62	160	410	
		120/160/200	84	216	480	
		250/350/500	84	216	480	
		700	84	216	480	
		1000	62	160	410	
额定转速[allowed nominal speed]	1/min		3500	3000	2500	
最大转速【max speed】	1/min		6000	6000	5000	
空回 [backlash]	[arcmin]	一级 ( 1stage )	<9	<8	<8	
		二级 ( 2stage )	<12	<10	<10	
		三级 ( 3stage )	<16	<14	<14	

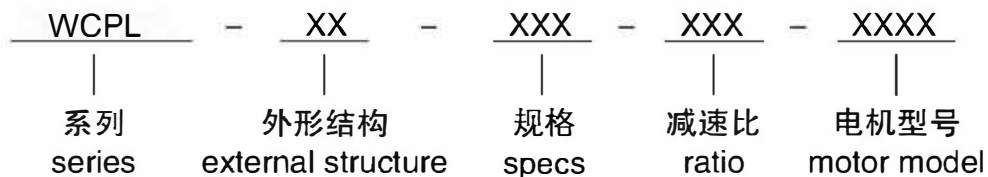
## 技术数据 · Technical data

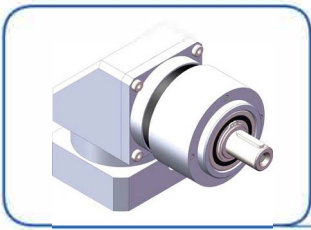
型号(type)			WCPL-AE-070	WCPL-AE-090	WCPL-AE-120
标准载荷[stand bearing]	径向Radialkraft		450N	1300N	2600N
	轴Axialkraft		500N	500N	1000N
最大载荷[max bearing]	径向Radialkraft				
	轴Axialkraft				
扭转刚度 [torsional stiffness]	Nm/arcmin		1.3	3.4	8.3
			1.7	4.8	14
			2.4	7.1	17
重量[Weight]	kg		1.0	2.3	5.8
			1.3	3.1	7.9
			1.6	3.9	10
转动惯量 [mass moment of inertia]	kgcm <sup>2</sup>	3	0.90	2.74	7.80
		4/12/16	0.76	1.14	7.20
		5/20/25	0.72	2.28	6.07
		7/35	0.70	2.10	6.07
		10/40/50/70/100	0.68	1.94	4.73
		120/160/200/250/350/500/700/1000	0.68	1.86	3.68
噪音[noise level]	dbA		≤68	≤74	≤85
负载效率 (Vollast) [efficiency at load]			1-级 [1-stage] 94% 2-级 [2-stage] 92% 3-级 [3-stage] 90%		
平均寿命 [service life]			> 30000 Std. [h]		
润滑 [lubrication]			长效极压润滑脂 [lifetime lubrication]		
防护等级 [protection rating]			IP 54		
运行温度 [operating temperature range]			(-20 ° C + 90 ° C)		

- 1) 此数据是在输入速度n1=3000 1/min, 并且在S1模式下的测量结果[Value refer to n1=3000 1/min and S1-mode]  
 2) 测试次数为500次[allowed 500 times]  
 3) 测试温度必须在允许温度范围之内[Allowable operation temperature must be kept]  
 4) 噪音指标是在1米距离, 输入速度n1=3000 1/min的测量值 [Measured in 1mtr. distance at n1=3000 1/min]

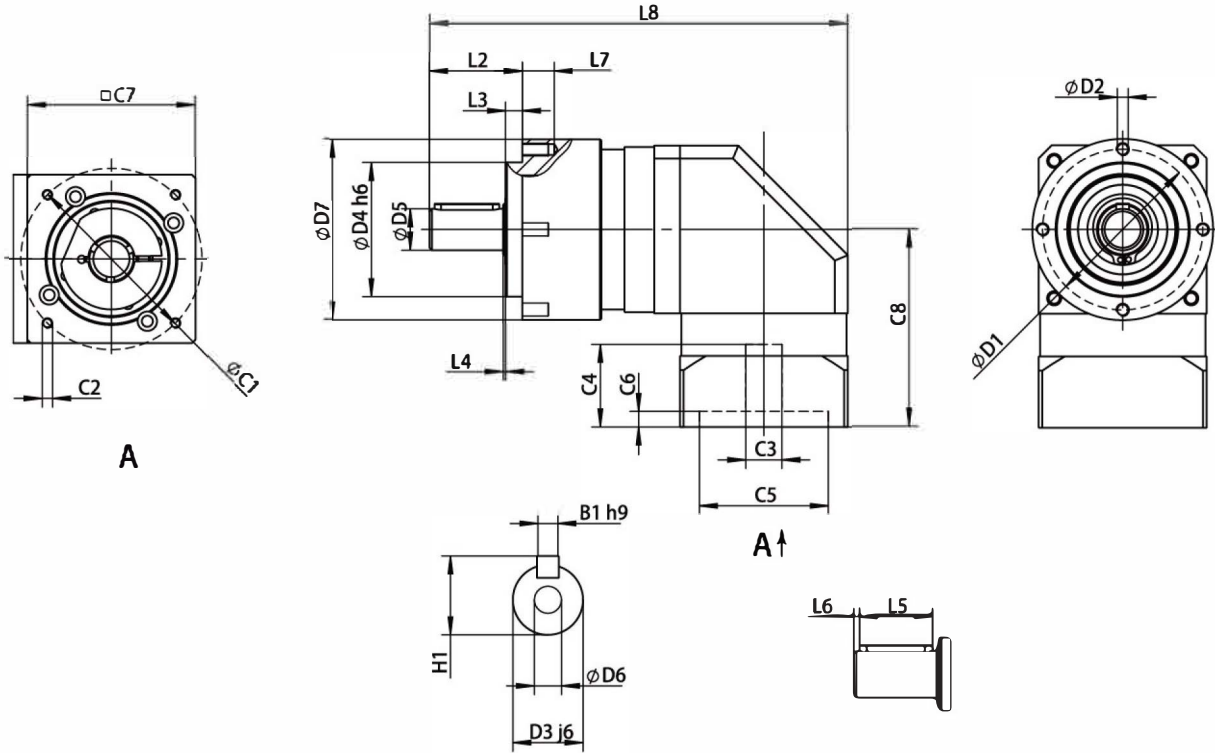
备注: 150系列减速机, 请咨询工厂

### 型号说明 Model description





技术数据 · Technical data



尺寸	WCPL-AE-070 i=3-10	WCPL-AE-070 i=16-100	WCPL-AE-090 i=3-10	WCPL-AE-090 i=16-100	WCPL-AE-120 i=3-10	WCPL-AE-120 i=16-100
D1	62	62	80	80	108	108
D2	M5	M5	M6	M6	M8	M8
D3 j6	16	16	22	22	32	32
D4 h6	52	52	68	68	90	90
D5	20	20	30	30	40	40
D6	M5	M5	M8	M8	M12	M12
D7	70	70	90	90	120	120
L2	36	36	46	46	70	70
L3	6.5	6.5	9	9	10	10
L4	1	1	2	2	1	1
L5	25	25	30	30	50	50
L6	2	2	2	2	4	4
L7	10	10	14	14	20	20
L8	162.5	182	211	243	288	328.5
C1	70	70	90	90	145	145
C2	M5	M5	M6	M6	M8	M8
C3	14	14	19	19	24	24
C4	33	33	41.5	41.5	59	59
C5	50	50	70	70	110	110
C6	6	6	9	9	9	9
C7	65	65	90	90	120	120
C8	76.5	76.5	96	96	113.5	113.5
B1 h9	5	5	6	6	10	10
H1	18	18	24.5	24.5	35	35

C1-C8为配置标准电机尺寸，仅供参考。如有不明，请咨询艾斯勒工厂。C1-C8 is the standard motor size for reference only. If you have any questions, please consult Eisler factory.

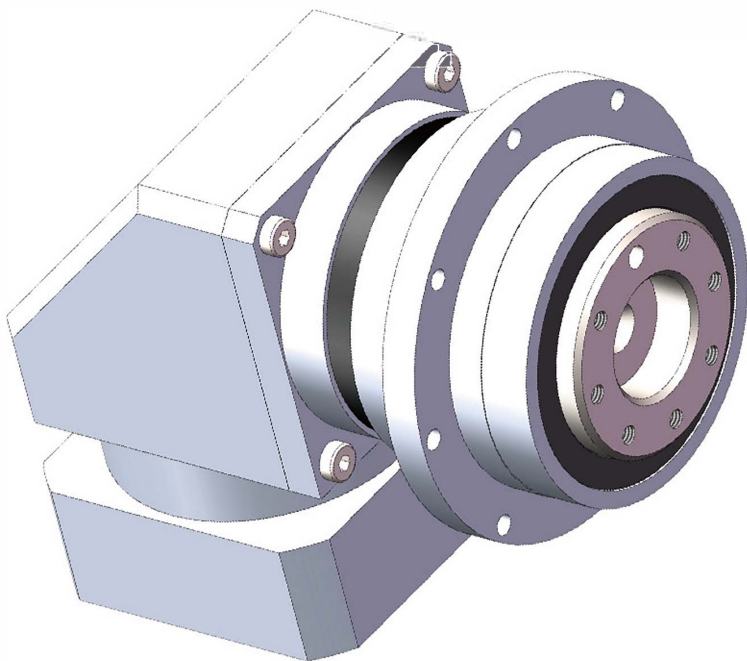


**Eisele**  
Antriebstechnik

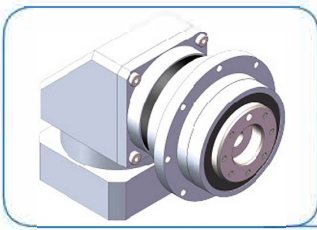
**行星齿轮减速机**

**WCPL-FE** Series

**PLANETARY  
GEARBOXES**







技术数据 · Technical data

型号(type)		减速比(ratio)	WCPL-FE-070	WCPL-FE-090	WCPL-FE-120	
额定输出扭矩 [nominal output torque]	Nm	4	20	40	100	
		5/7	26	54	120	
		10	16	40	105	
		12	36	80	170	
		16/20/40/70	42	100	210	
		25/35/50	44	100	210	
		100	18	64	165	
		120/160/200	42	100	210	
		250/350/500	44	100	210	
		700	42	100	210	
		1000	25	64	165	
加减速输出扭矩 [max.acceleration torque]	Nm	4	36	70	180	
		5/7	44	100	200	
		10	24	75	180	
		12	45	100	215	
		16/20/40/70	52	125	255	
		25/35/50	55	125	255	
		100	28	80	180	
		120/160/200	52	125	255	
		250/350/500	55	125	255	
		700	52	125	255	
		1000	28	80	180	
急停扭矩 [emergency torque]	Nm	4	72	160	255	
		5/7	84	216	200	
		10	62	160	480	
		12	72	160	410	
		16/20/40/70	84	216	400	
		25/35/50	84	216	480	
		100	62	160	410	
		120/160/200	84	216	480	
		250/350/500	84	216	480	
		700	84	216	480	
		1000	62	160	410	
额定转速[allowed nominal speed]	1/min		3500	3000	2500	
最大转速【max speed】	1/min		6000	6000	5000	
空回 [backlash]	[arcmin]	一级 ( 1stage )	<9	<8	<8	
		二级 ( 2stage )	<12	<10	<10	
		三级 ( 3stage )	<16	<12	<12	

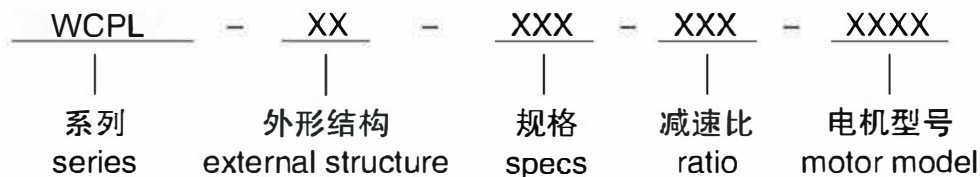
技术数据 · Technical data

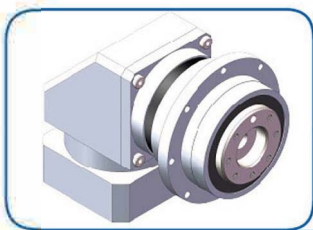
型号(type)			WCPL-FE-070	WCPL-FE-090	WCPL-FE120	
标准载荷[stand bearing]	径向Radialkraft		1125N	2800N	5000N	
	轴Axialkraft		1250N	2500N	4500N	
最大载荷[max bearing]	径向Radialkraft					
	轴Axialkraft					
扭转刚度 [torsional stiffness]	Nm/arcmin	10/100/1000	1.3	3.4	8.3	
		7/70/700	1.7	4.8	14	
		其他 [other ratio]	2.4	7.1	17	
重量[Weight]	kg	一级	1.0	2.3	5.8	
		二级	1.3	3.1	7.9	
		三级	1.6	3.9	10	
转动惯量 [mass moment of inertial]	kgcm <sup>2</sup>	4		2.74	13.08	
		12/16	0.38	2.28	9.60	
		5/20/25	0.36	2.10	8.10	
		7/35	0.35	1.94	6.80	
		10/40/50/70/100	0.34	1.86	6.20	
		120/160/200/250/350/500/700/1000	0.34	1.86	6.24	
噪音[noise level]	dbA		<68	≤74	≤85	
负载效率 (Vollast) [efficiency at load]	1-级 [1-stage] 94% 2-级 [2-stage] 92% 3-级 [3-stage] 90%					
平均寿命 [service life]	> 30000 Std. [h]					
润滑 [lubrication]	长效极压润滑脂 [lifetime lubrication]					
防护等级 [protection rating]	IP 54					
运行温度 [operating temperature range]	(-20 ° C + 90 ° C)					

1) 此数据是在输入速度n1=3000 1/min, 并且在S1模式下的测量结果[Value refer to n1=3000 1/min and S1-mode]  
 2) 测试次数为500次[allowed 500 times]  
 3) 测试温度必须在允许温度范围之内[Allowable operation temperature must be kept]  
 4) 噪音指标是在1米距离, 输入速度n1=3000 1/min的测量值 [Measured in 1mtr. distance at n1=3000 1/min]

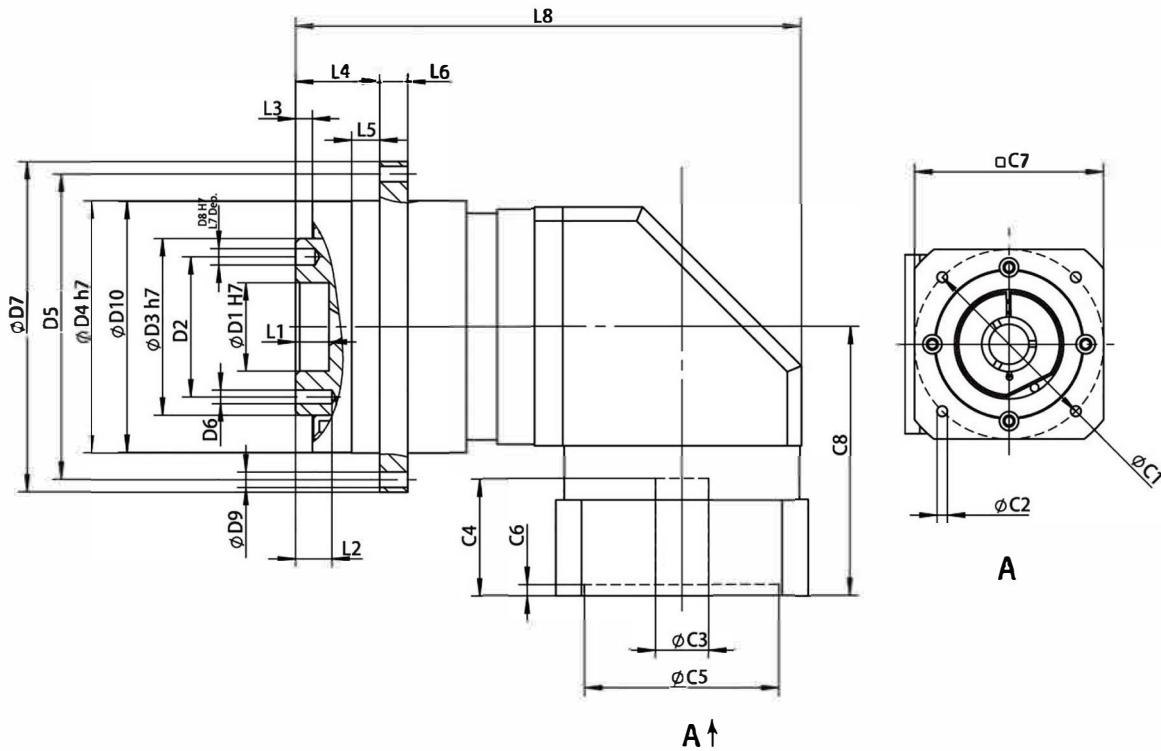
备注: 150系列减速机, 请咨询工厂

型号说明 Model description





技术数据 · Technical data



尺寸	WCPL-FE-070 i=5-10	WCPL-FE-070 i=20-100	WCPL-FE-090 i=3-10	WCPL-FE-090 i=16-100	WCPL-FE-120 i=3-10	WCPL-FE-120 i=16-100
D1 h7	20	20	31.5	31.5	40	40
D2	31.5	31.5	50	50	63	63
D3 h7	40	40	63	63	80	80
D4 h7	64	64	90	90	110	110
D5	79	79	109	109	135	135
D6	7xM5	7xM5	7xM6	7xM6	11xM6	11xM6
D7	86	86	118	118	145	145
D8 H7	5	5	6	6	6	6
D9	8x4.5	8x4.5	8x5.5	8x5.5	8x5.5	8x5.5
D10	63.5	63.5	89.5	89.5	109.5	109.5
L1	5	5	7	7	6	6
L2	11	11	13.5	13.5	18	18
L3	3	3	6	6	6	6
L4	19.5	19.5	30	30	29	29
L5	7	7	10	10	10	10
L6	7	7	10	10	15	15
L7	7	7	7	7	7	7
L8	149	171	180.5	212.5	237	277.5
C1	70	70	90	90	145	145
C2	M5	M5	M6	M6	M8	M8
C3	14	14	19	19	24	24
C4	33	33	41.5	41.5	59	59
C5	50	50	70	70	110	110
C6	6	6	9	9	9	9
C7	65	65	90	90	120	120
C8	76.5	76.5	96	96	113.5	113.5

C1-C8为配置标准电机尺寸, 仅供参考。如有不明, 请咨询艾斯勒工厂。C1-C8 is the standard motor size for reference only. If you have any questions, please consult Eisele factory.



# Eisele

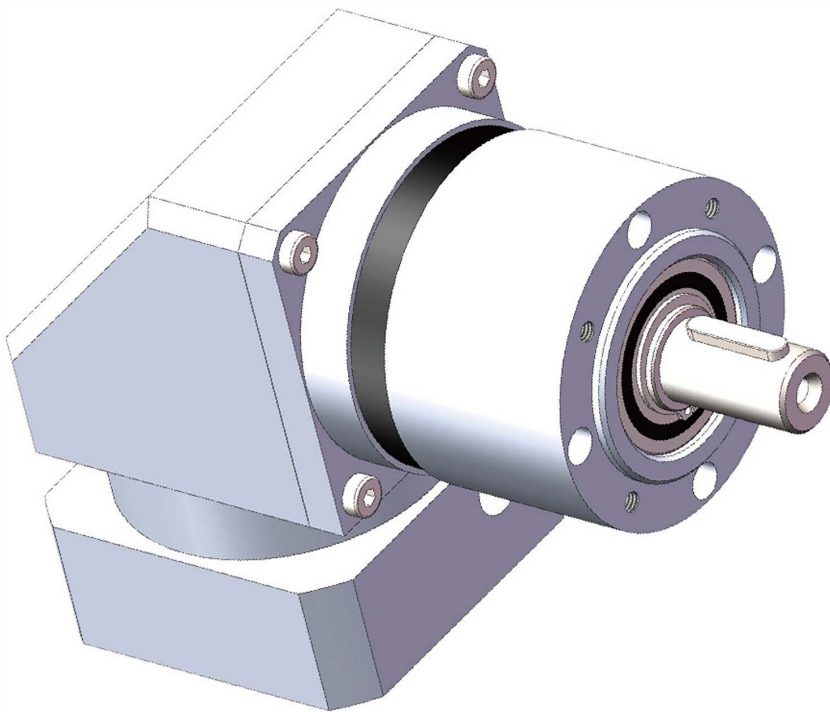
Antriebstechnik

## 行星齿轮减速机

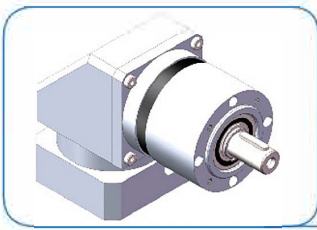
---

# WDPL

Series



PLANETARY  
GEARBOXES



技术数据 · Technical data

型号(type)		减速比(ratio)	WDPL-O64	WDPL-O84	WDPL-118	
额定输出扭矩 [nominal output torque]	Nm	3	20	40	100	
		4/5/7	26	54	120	
		10	16	40	105	
		12	36	80	170	
		16/20/40/70	42	100	210	
		25/35/50	44	100	210	
		100	18	64	165	
		120/160/200	42	100	210	
		250/350/500	44	100	210	
		700	42	100	210	
		1000	25	64	165	
加减速输出扭矩 [max.acceleration torque]	Nm	3	36	70	180	
		4/5/7	44	100	200	
		10	24	75	180	
		12	45	100	215	
		16/20/40/70	52	125	255	
		25/35/50	55	125	255	
		100	28	80	180	
		120/160/200	52	125	255	
		250/350/500	55	125	255	
		700	52	125	255	
		1000	28	80	180	
急停扭矩 [emergency torque]	Nm	3	72	160	255	
		4/5/7	84	216	200	
		10	62	160	480	
		12	72	160	410	
		16/20/40/70	84	216	400	
		25/35/50	84	216	480	
		100	62	160	410	
		120/160/200	84	216	480	
		250/350/500	84	216	480	
		700	84	216	480	
		1000	62	160	410	
额定转速[allowed nominal speed]	1/min		3500	3000	2500	
最大转速【max speed】	1/min		6000	6000	5000	
空回 [backlash]	[arcmin]	一级 ( 1stage )	<9	<8	<8	
		二级 ( 2stage )	<12	<10	<10	
		三级 ( 3stage )	<16	<14	<14	

技术数据 · Technical data

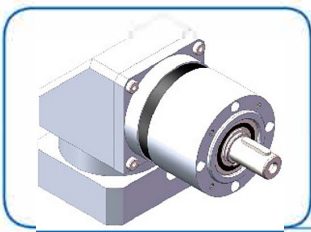
型号(type)		WDPL-064	WDPL-084	WDPL-118
标准载荷[stand bearing]	径向Radialkraft	450N	1300N	2600N
	轴Axialkraft	500N	500N	1000N
最大载荷[max bearing]	径向Radialkraft			
	轴向Axialkraft			
扭转刚度 [torsional stiffness]	Nm/arcmin	1.3	3.4	8.3
		1.7	4.8	14
		2.4	7.1	17
重量[Weight]	kg	1.0	2.3	5.8
		1.3	3.1	7.9
		1.6	3.9	10
转动惯量 [mass moment of inertia]	kgcm <sup>2</sup>	3	0.90	2.74
		4/12/16	0.76	2.28
		5/20/25	0.72	2.10
		7/35	0.70	1.94
		10/40/50/70/100	0.68	1.86
		120/160/200/250/350/500/700/1000	0.68	1.86
噪音[noise level]	dbA	≤68	≤74	≤85
负载效率 (Vollast) [efficiency at load]	1-级 [1-stage] 94% 2-级 [2-stage] 92% 3-级 [3-stage] 90%			
平均寿命 [service life]	> 30000 Std. [h]			
润滑 [lubrication]	长效极压润滑脂 [lifetime lubrication]			
防护等级 [protection rating]	IP 54			
运行温度 [operating temperature range]	(-20 ° C + 90 ° C)			

- 1) 此数据是在输入速度n1=3000 1/min, 并且在S1模式下的测量结果[Value refer to n1=3000 1/min and S1-mode]  
 2) 测试次数为500次[allowed 500 times]  
 3) 测试温度必须在允许温度范围之内[Allowable operation temperature must be kept]  
 4) 噪音指标是在1米距离, 输入速度n1=3000 1/min的测量值 [Measured in 1mtr. distance at n1=3000 1/min]

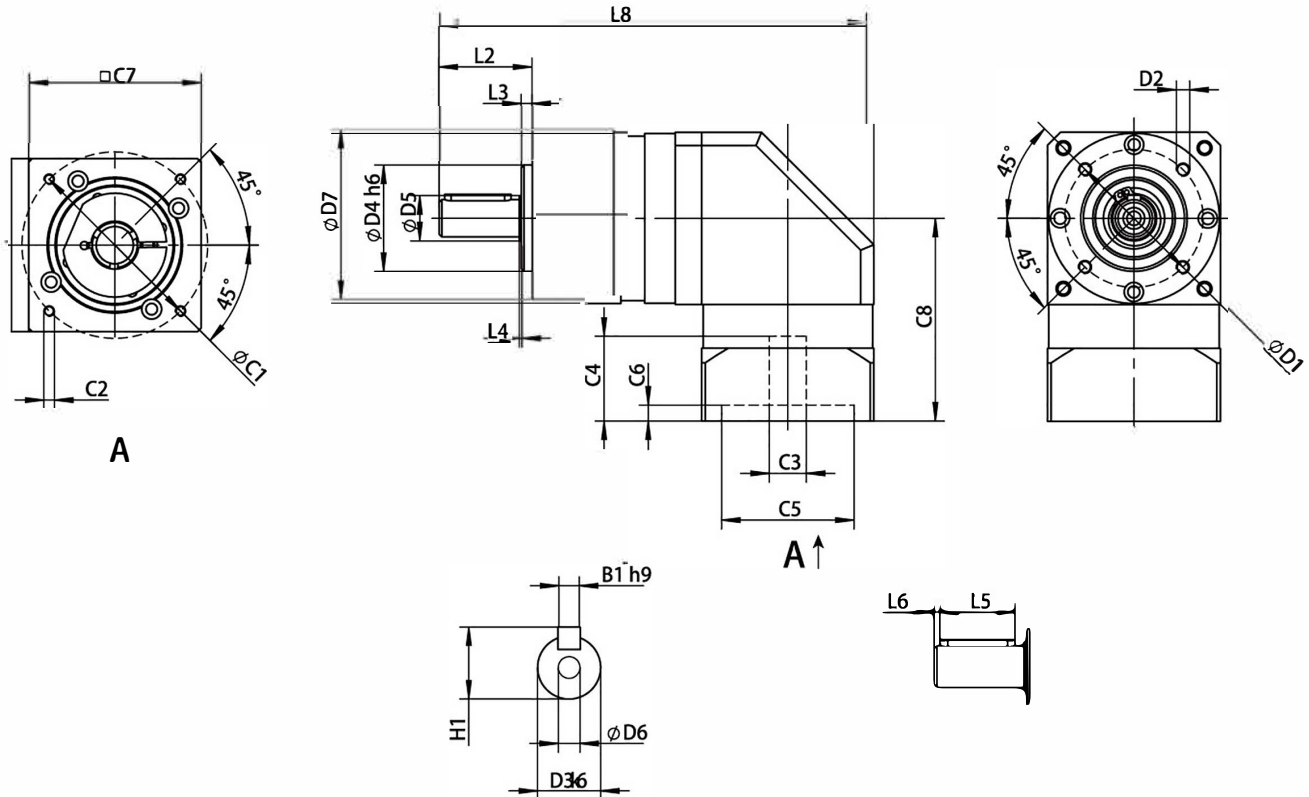
备注: 150系列减速机, 请咨询工厂

型号说明 Model description





技术数据 · Technical data



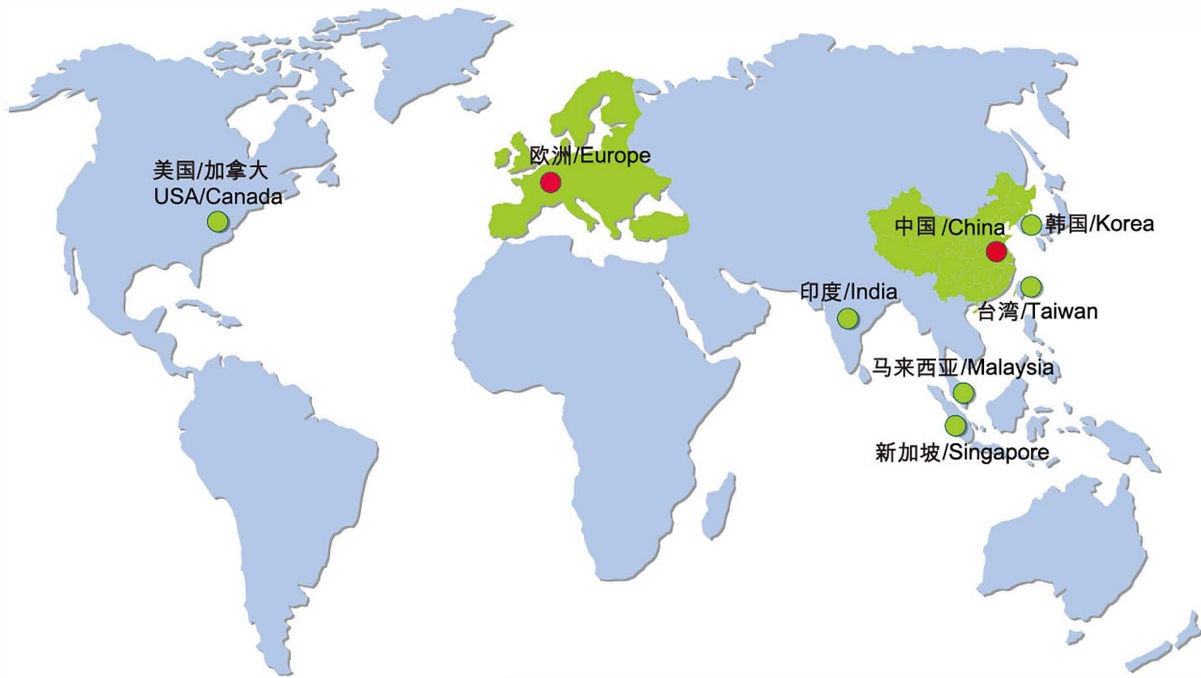
尺寸	WDPL-064 i=3-10	WDPL-064 i=16-100	WDPL-084 i=3-10	WDPL-084 i=16-100	WDPL-118 i=3-10	WDPL-118 i=16-100
D1	52	52	70	70	100	100
D2	M5x10	M5x10	M6x12	M6x12	M10x18	M10x18
D3 k6	14	14	20	20	25	25
D4 h6	40	40	60	60	80	80
D5	17	17	25	25	35	35
D6	M5	M5	M6	M6	M10	M10
D7	64	64	84	84	118	118
L2	35	35	40	40	55	55
L3	4	4	3	3	4	4
L4	1	1	1	1	1	1
L5	25	25	28	28	45	45
L6	2	2	4	4	1.5	1.5
L8	161	180	211	243	280	320.5
C1	70	70	90	90	145	145
C2	M5	M5	M6	M6	M8	M8
C3	14	14	19	19	24	24
C4	33	33	41.5	41.5	59	59
C5	50	50	70	70	110	110
C6	6	6	9	9	9	9
C7	65	65	90	90	120	120
C8	76.5	76.5	96	96	113.5	113.5
B1 h9	5	5	6	6	8	8
H1	16	16	22.5	22.5	28	28

C1-C8为配置标准电机尺寸，仅供参考。如有不明，请咨询艾斯勒工厂。C1-C8 is the standard motor size for reference only. If you have any questions, please consult Eisele factory.

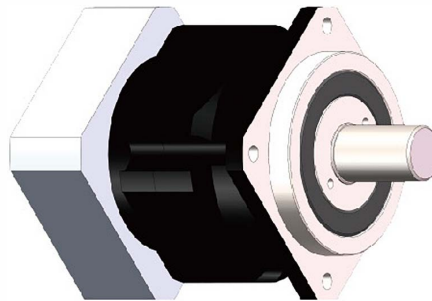
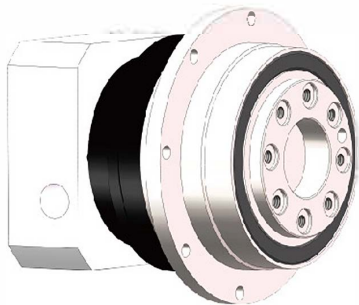
对于本样册中产品的形状、尺寸、及其它参数变更，恕不另行通知。

The shape, dimensions, and other parameters of the products in this sample booklet are subject to change without prior notice.





## 精密系列CPH



### 代理经销商

艾斯勒精密齿轮（苏州）有限公司  
江苏省吴江市经济开发区江兴东路1128号  
电话: 86-512-82079036  
86-512-82079037  
传真: 86-512-82079035  
E-mail:sales@eisele-gear.com  
Http://www.eisele-gear.com

Eisele Antriebstechnik GmbH  
Vor dem Weißen Stein 17  
72461 Albstadt  
Tel: 0 74 32 / 9 80 21 11  
Fax: 0 74 32 / 9 80 21 29  
E-mail:rgoez@eisele-getriebe.de  
Homepage:www.eisele-getriebe.de